

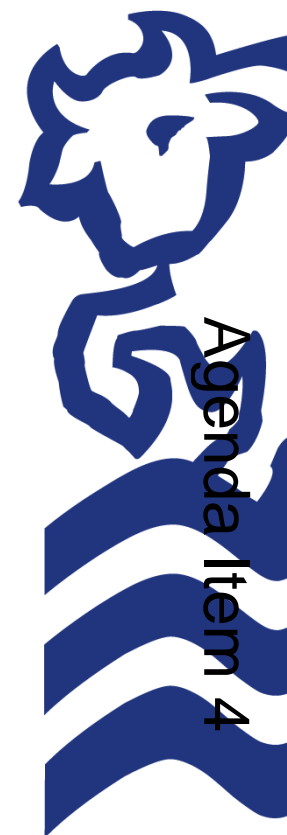
# West Area Planning Committee Presentation

[www.oxford.gov.uk](http://www.oxford.gov.uk)

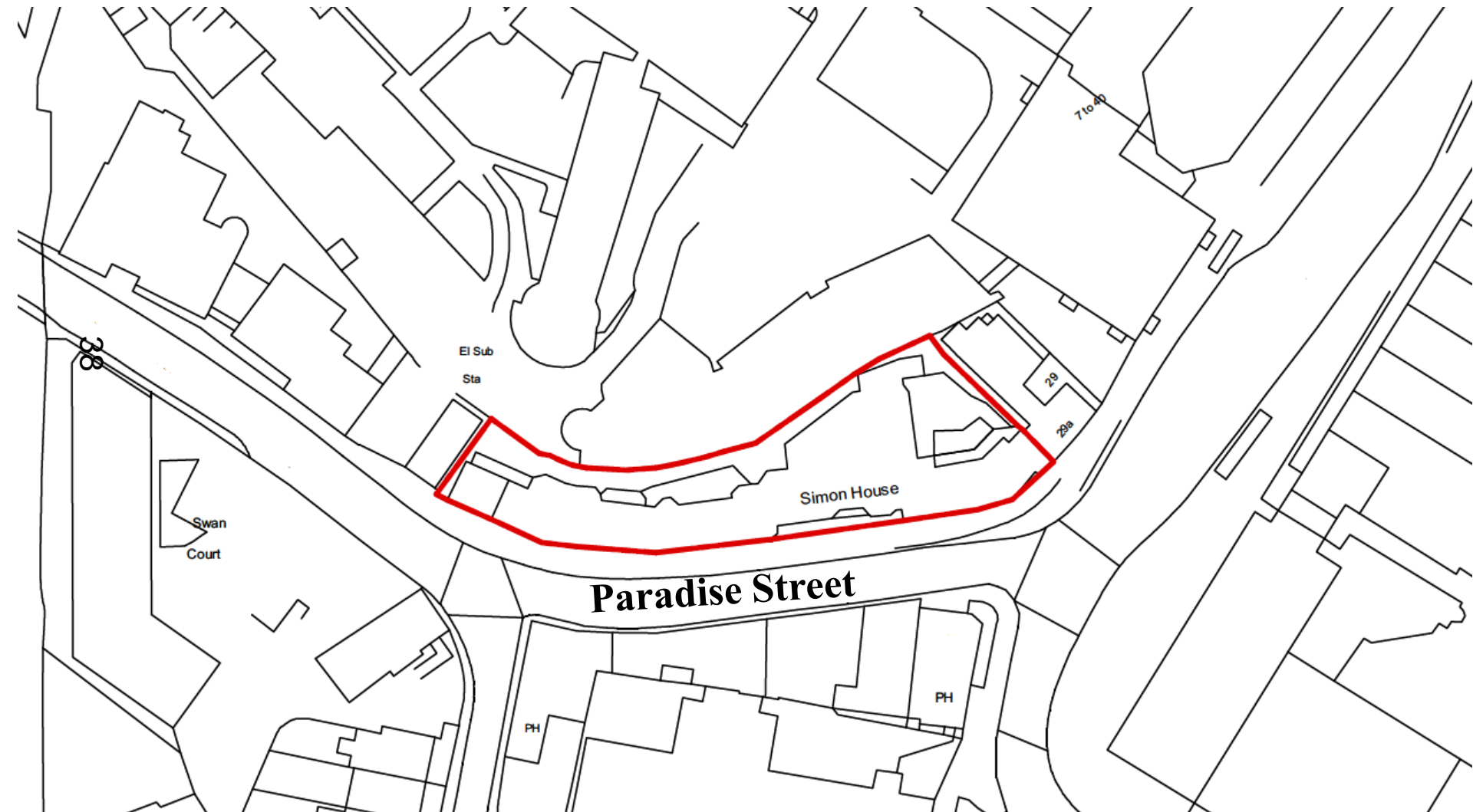


**18/03370/FUL**

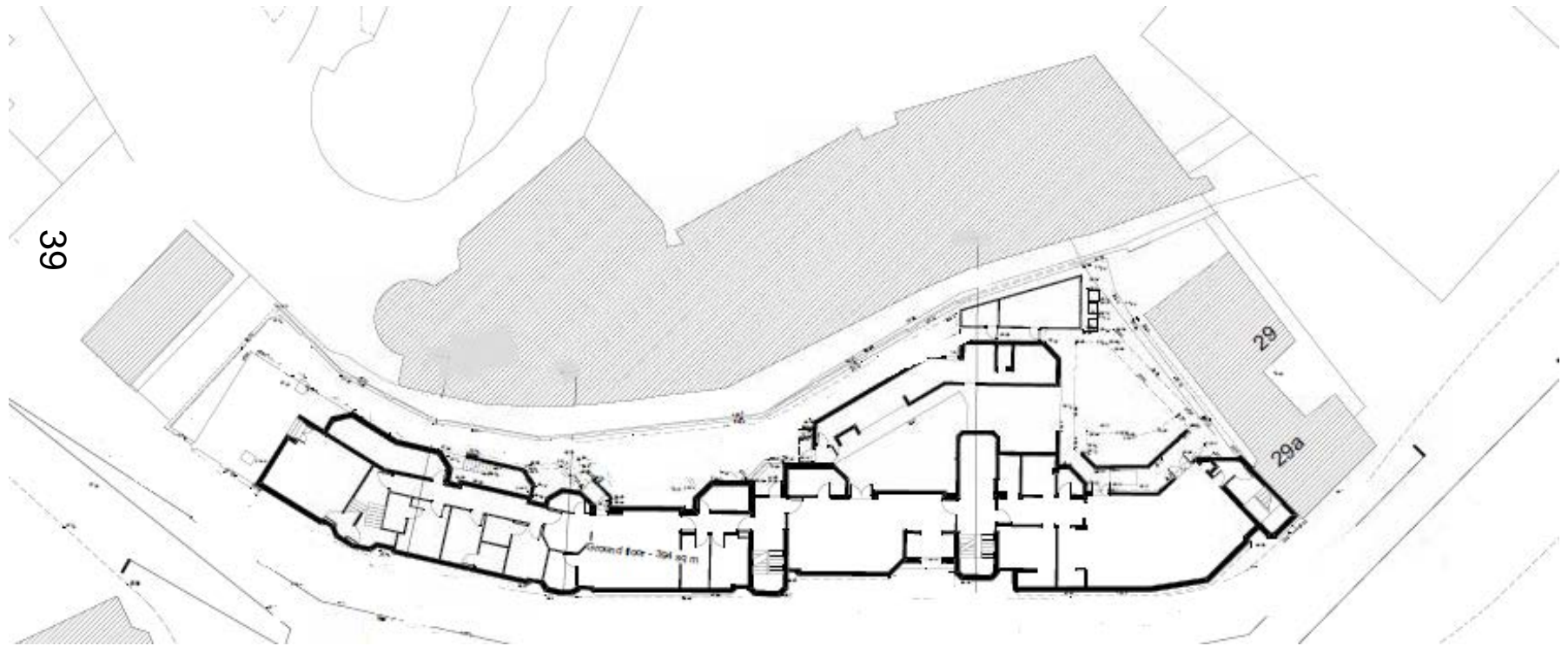
**Simon House  
1 - 5 Paradise Street  
Oxford  
Oxfordshire  
OX1 1LD**



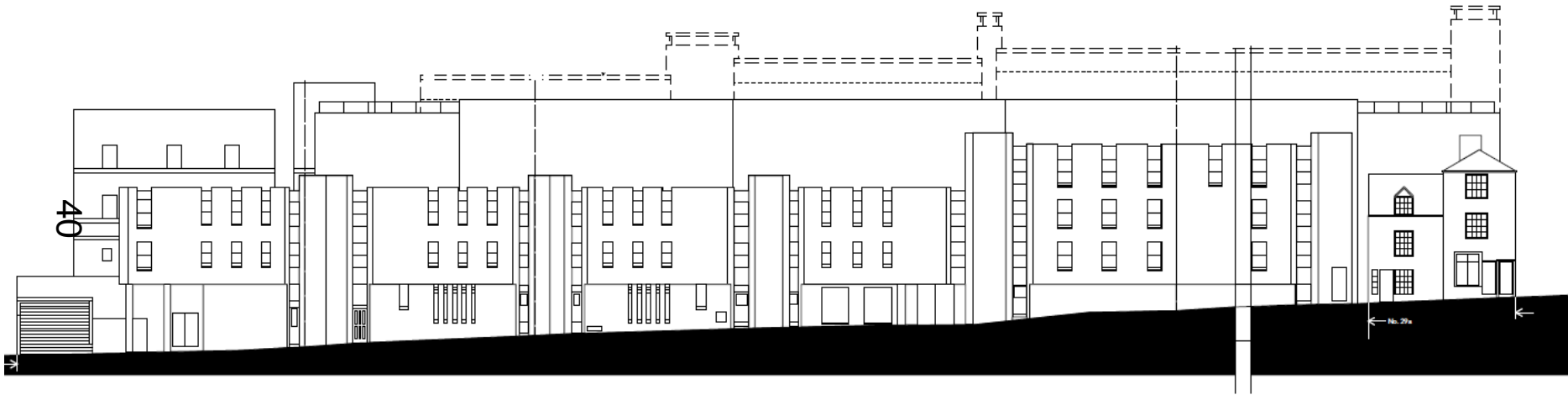
# Site Location Plan



# Existing Plan



# Existing Paradise Street elevation



# Proposed site and ground floor plan



# Proposed first floor plan



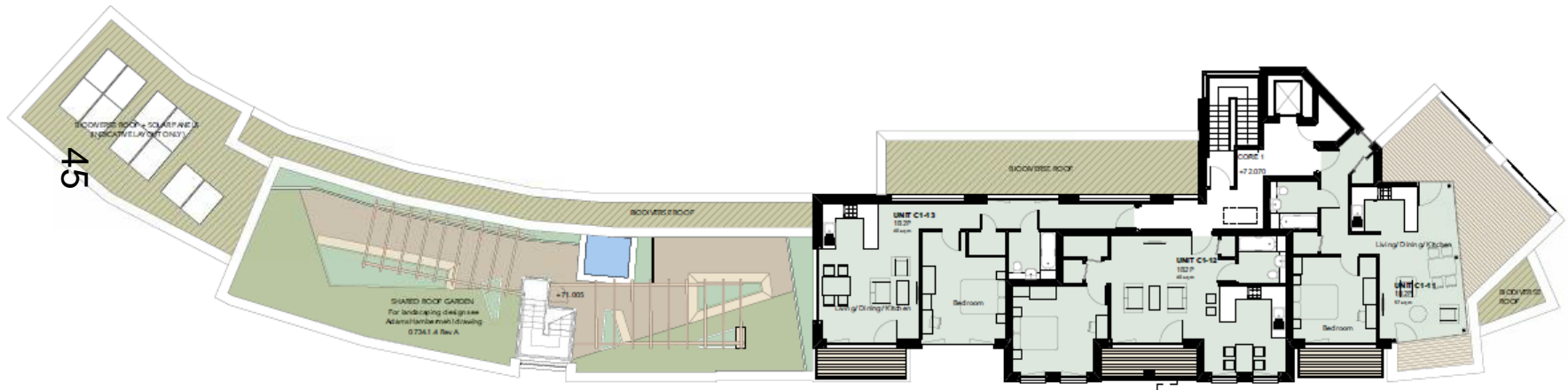
# Proposed second floor plan



# Proposed third floor plan



# Proposed fourth floor plan



# Proposed roof plan



# Proposed front elevation



# Proposed west elevation



# Proposed east elevation



# Proposed rear elevation



# Landscape plan

51



# Verified view from Castle Street



View 07 - Castle Street - See original AVR London Verified View Scoping Study

# Verified view from inside the Westgate



# Verified view from Norfolk Street



View 08 - Norfolk Street - See original AVR London Verified View Scoping Study

# Verified view from Paradise Square

55



View 13 - Paradise Square - See original AVR London Verified View Scoping Study

# Verified view from Raleigh Park

Simon House



# Verified view from Hinksey Hill



# Verified View from Boars Hill



# Verified view from St George's Tower

59



# Verified view from Carfax Tower



# Verified view from The Mound



## Photos of the site – from the steps of Westgate



## Photos of the site – view from Castle Street



## Photos of the site – view from Paradise Square



# Photos of the site – from the garden looking towards 29 and 29a Castle Street



# Photos of the site – looking at the prison wall from the garden of Simon House



# Photos of the site – rear of Simon House



# Photos of the site – view looking towards the Westgate with the listed buildings opposite Simon House

